

**AFTER TWO YEARS OF HIGHLY INTENSIVE, YET
TOP SECRET DEVELOPMENT, THE REVOLUTION
IN TRULY AFFORDABLE VEHICLE DIAGNOSTIC
EQUIPMENT, IS NOW HERE.**

RovacomLite

**Vehicle
Diagnostic
System**

RPI. ENGINEERING

International Ltd

Specialised V8 Rover Engines

Typically costing less than 10% of the price of any other diagnostic system for Land Rover vehicles, ROVACOM LITE is an all brand new, PC based diagnostic system, which utilizes fantastic new concepts to push the boundaries of diagnostic equipment technology to new levels. It is designed, specifically to be high on functionality yet easily affordable by individual owners, enthusiasts clubs or DIY home mechanics, and will shape the future of vehicle diagnostic systems forever.

It has always been a well kept trade secret that vehicles with complex on board electronic systems, instead of being difficult and expensive to work on, can actually be very quick and easy to repair. This is due to the fact that these systems all feature incredibly sophisticated built-in self-diagnostic capabilities, often termed On Board Diagnostics (OBD).

The benefits of having a system which gives access to the built-in self diagnostic capabilities of these vehicle systems is plainly obvious and this is one of the reasons why such equipment usually costs several thousands of pounds. ROVACOM LITE however, is very different. Although it only costs from as little as £600, it has capabilities way ahead of anything else costing ten times as much, it is also incredibly simple to use. We are so convinced that anyone who buys one will be so impressed with it that we offer the ultimate guarantee. If you don't like it, you can simply return it within 30 days and have your money back.

- Super powerful functionality: ROVACOM LITE goes far beyond the capabilities of any other equipment in existence, in nearly all respects, even allowing unlocking of BECMs.

- Infinitely expandable: Although initially launched with software modules being offered only for Land Rover vehicles, ROVACOM LITE has been specifically designed to be infinitely expandable, and hundreds of modules have in fact already been developed for nearly all makes and models of vehicle (including motorbikes). These will be offered shortly.

- Revolutionary hardware: ROVACOM LITE uses an all-new, ultra low cost interface server. This tiny box handles all vehicle communication requirements, allowing you to use nearly any standard desktop or laptop PC without any of the normal processor speed or operating system incompatibility issues.

- Extremely helpful: Built-in help system with masses of dedicated pages for each system, easily and understandably explaining, with the use of pictures, every single detail. It is also fully Internet linked, for further help, upgrades, forums, discussion groups and technical support.

- Simple to use: ROVACOM LITE uses brilliantly simple Internet Explorer style software, giving easy point and click access to huge amounts of stored settings and values or live data from your vehicle's systems for viewing changing or printing, just as easily as if you were surfing the Internet.

- Very affordable: The cost of ROVACOM LITE, obviously varies depending upon the vehicle. But to help give you an idea of how affordable it really is, the interface & server costs only £425, leads cost on average £18 each (usually only one is required), and software modules typically cost between £45 and £150 each. A full system is therefore between £600 and £1250. Exact prices for specific vehicles can be obtained by using our online vehicle model selector at www.rovacomlite.com

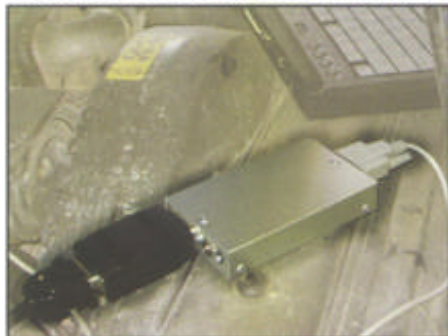
THE ROVACOM LITE SYSTEM



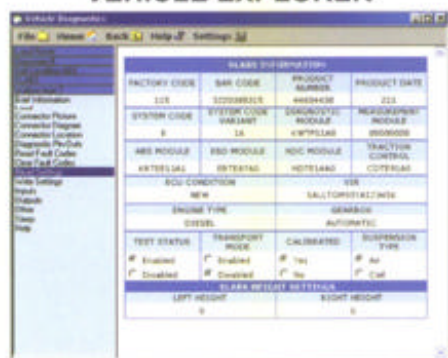
CONNECTED TO A VEHICLE



USING THE VEHICLE SERVER



VEHICLE EXPLORER



BUILT-IN HELP SYSTEM



For ROVACOM LITE we have devised a brand new and very ingenious solution using the modern Internet as inspiration. To understand how this works you need to understand a little of how the Internet works. With the Internet, a browser such as Internet explorer is used to send a request (clicking on a link) for a page through a connection to a computer more commonly referred to as a server, which can be located anywhere in the world. The server receives the request and sends back the requested page to be displayed by the browser. If the page requested includes live information from devices directly connected to the server, such as in a weather station or a web cam, the server fills in this information on the page when the request is made and in the case of a live data stream such as video from the web cam this will be continually resent by the server to the browser. Naturally, there is a small delay to this due to the distances involved. But imagine if the server was directly connected between the PC with its browser and a vehicle. The browser could then send a request to the server for a page of fault codes, stored settings, or live real time sensor data from any one of the vehicle's on board computers. The server would then, without hardly any delay, get the requested information from the vehicle, put it in a page and send it back to the browser to be displayed. The PC does not need to do anything special at all, it simply issues requests for pages and shows the returning result at whatever pace it is able to. The server itself handles absolutely all of the timing critical communications to the vehicle and the processing of the raw data. And because it is totally customized and dedicated to the one task only, it is extremely reliable. Incredible and futuristic as this might seem, this is exactly what we have achieved with ROVACOM LITE. Of course there are also endless possibilities for communicating with the vehicle server remotely using any number of methods such as Internet connection, radio link or infrared.

Understanding that many of our customers may well not be too familiar with computers we recognize how important it is to make our control software very easy to use and understand. And since our inspiration for the whole system is based on the Internet it was only natural to produce our user interface in the same style as an Internet browser such as Microsoft's Internet explorer. In fact we could have used this browser as it was but instead have incorporated the parts of its functionality that we require into our own version, which we call Vehicle Explorer as it is specifically tailored for this application. This gives huge benefits in that the Internet browsers are already well recognized for their usability as testified to by the millions of ordinary people who now use them fluently. It is also a very stable solution having been tried and tested for many years.

Using the vehicle explorer to browse through the pages of information obtained from the systems within the vehicle that the vehicle server is connected to, is therefore virtually identical to browsing pages of information from the Internet. Moving between pages is performed by clicking on highlighted "Links" to other pages or going "Back", or straight to "Home" (the starting place). It is also possible to view the history of previous selections and click on any one of the selections you have previously made to go back to that place. Reading data such as a fault code memory is like reading a normal page of text, clearing them is like clicking a submit button on a form, printing is like printing any on line page, changing settings is like selecting an option in a radio box, entering data is like filling in an on line form, and monitoring live data is like seeing a page with a neat layout of data boxes with constantly updating values. Already, without having seen or used the vehicle explorer software you can imagine how truly simple and user friendly it is. There is no need to do anything special at all, it simply issues requests for pages and shows the returning result at whatever pace it is able to. The server itself handles absolutely all of the timing critical communications to the vehicle and the processing of the raw data. And because it is totally customized and dedicated to the one task only, it is extremely reliable. Incredible and futuristic as this might seem, this is exactly what we have achieved with ROVACOM LITE. Of course there are also endless possibilities for communicating with the vehicle server remotely using any number of methods such as Internet connection, radio link or infrared.

Due to the fact that all of our pages are created using the standard Internet format of HTML, this means that we have also created all of our help pages using indexes, pictures, tables and diagrams to help explain clearly and simply every single feature and function of each vehicle system. We have also provided embedded links to any places on the internet which when clicked, in conjunction with a normal internet connection, give you access to a vast amount of further information including not only places of interest and relevance to each vehicle system but to services such as companies who repair, loan, test and supply new and used vehicle system components. This means that ROVACOM LITE is not only an affordable diagnostic system of unequalled capability in respect of accessing the vehicles own built in self-diagnostics, but it is also an endless source of information too.